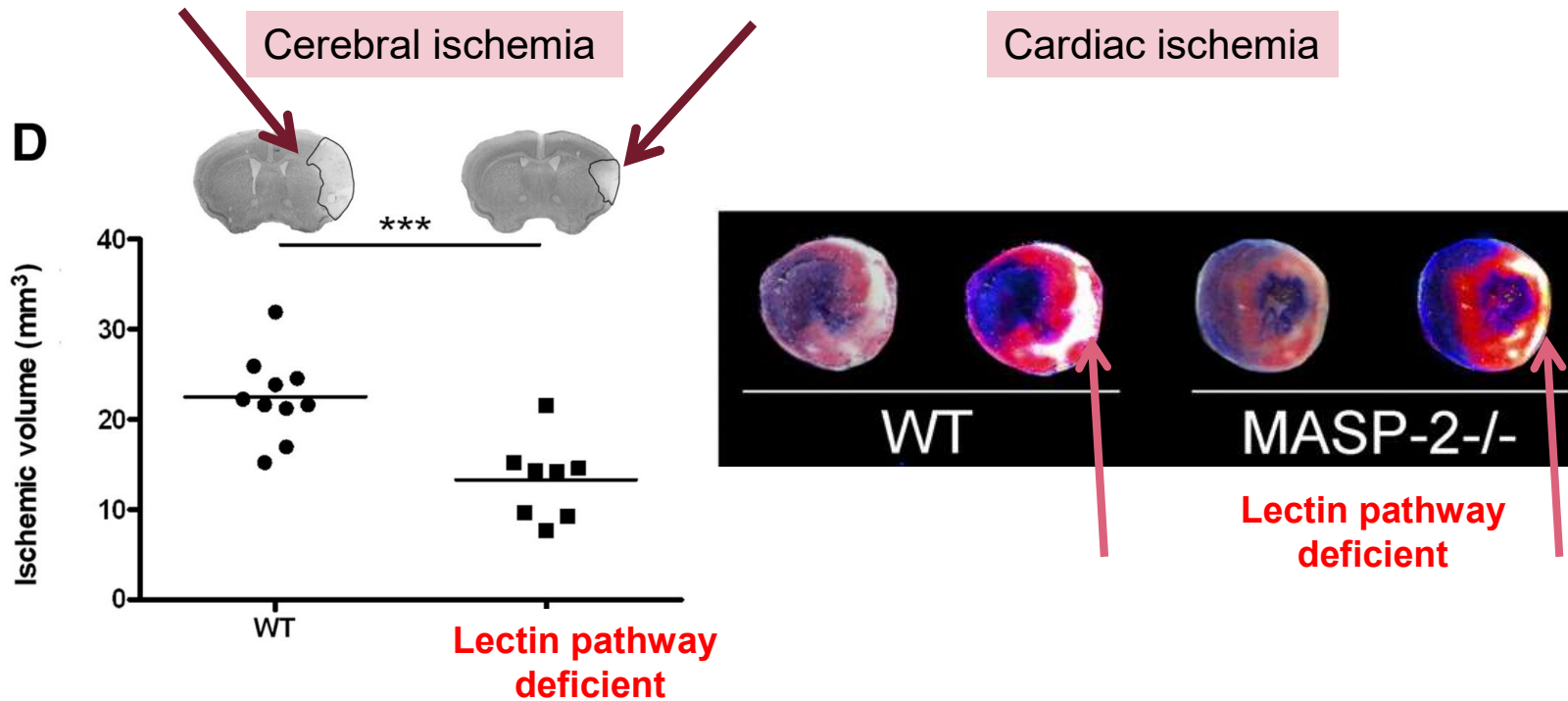
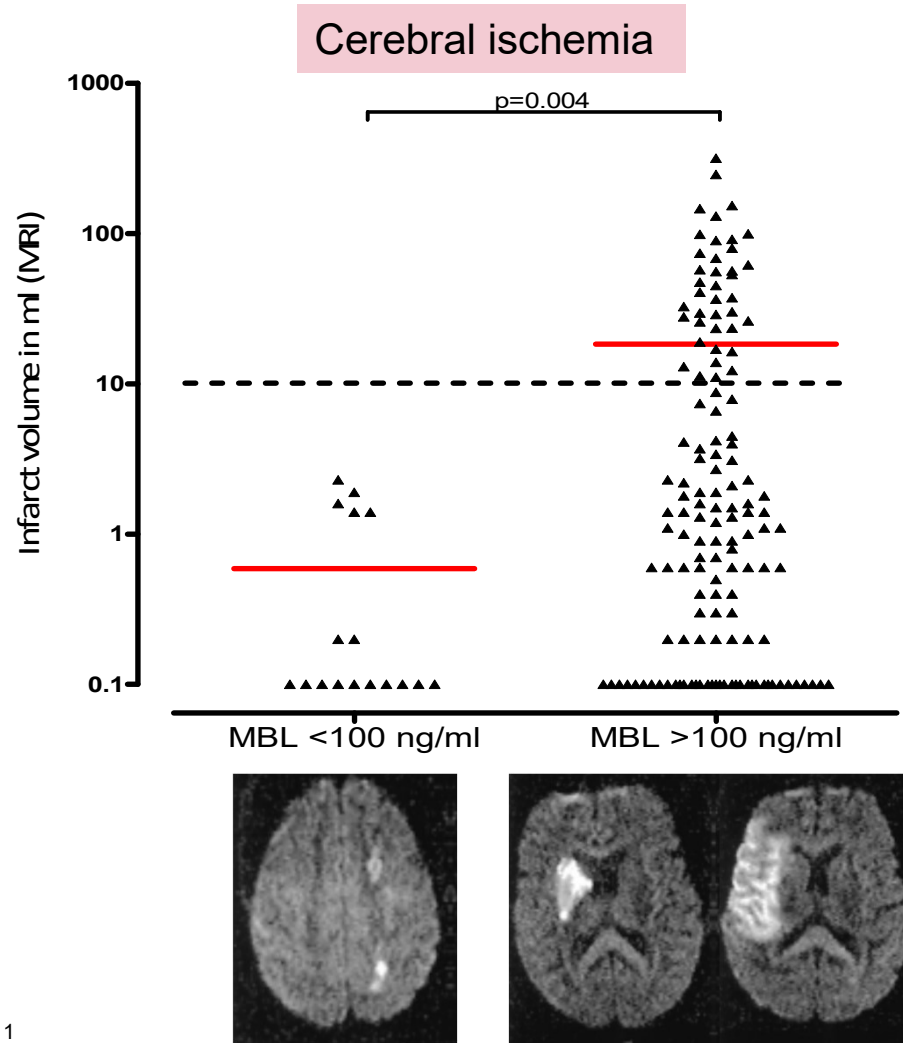


Lectin pathway and ischemia



Lectin pathway deficiency or inhibition **attenuates** I/R injury in animal models (cardiac, cerebral, renal, muscle, gut ischemia)

Lectin pathway and human ischemia



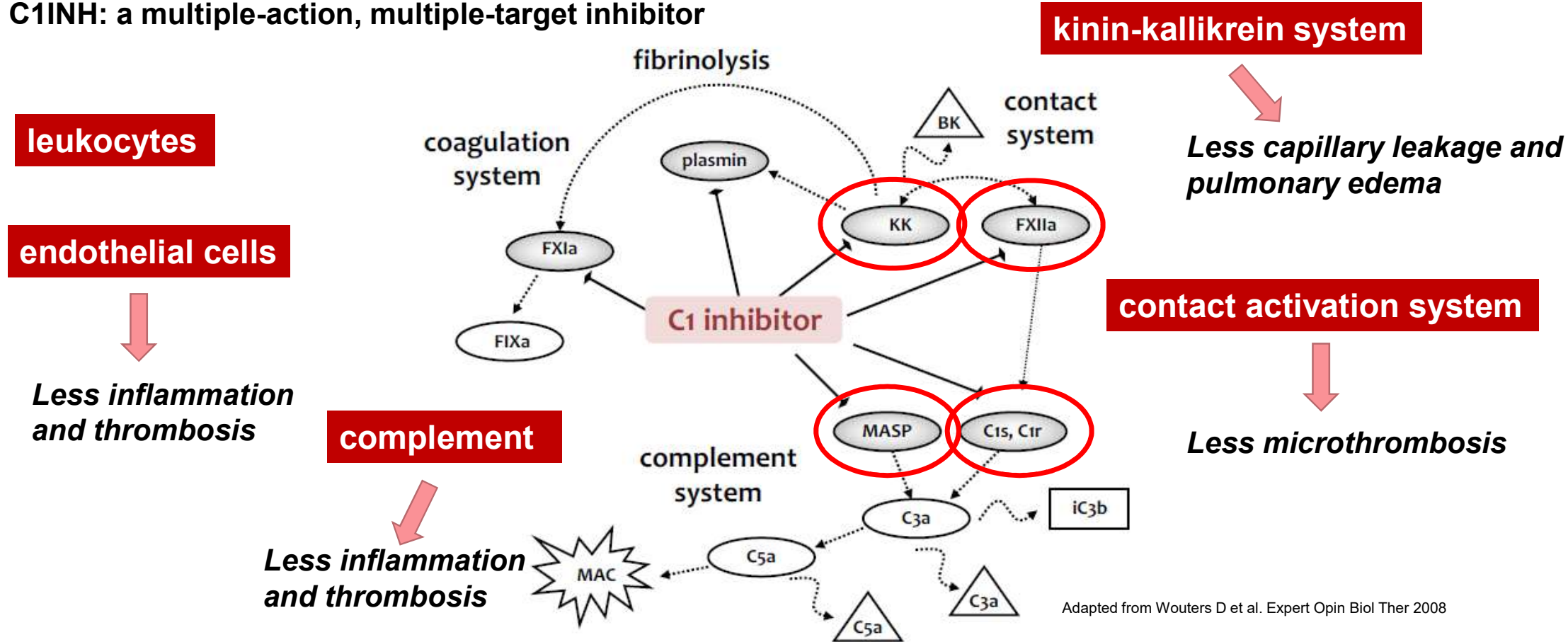
Osthoff M et al., PLoS One. 2011

30.06.2021

8

C1 esterase inhibitor

C1INH: a multiple-action, multiple-target inhibitor



Adapted from Wouters D et al. Expert Opin Biol Ther 2008