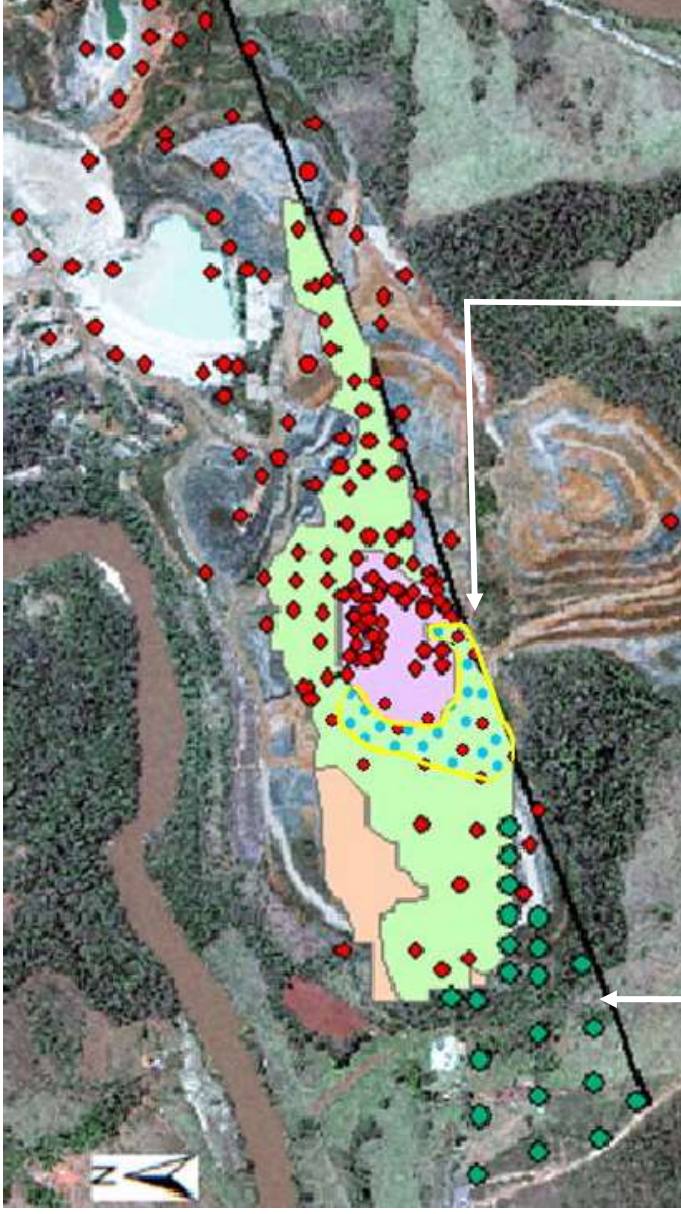


MIBRA MINE – MINE LIFE EXTENSION – DRILLING CAMPAIGN & RESOURCE EXPANSION



Purpose & Benefits

- Expand existing tantalum and lithium resources in Mibra
- Upgrade existing mineral resources from 'Inferred' to 'Indicated' and / or 'Indicated' to 'Measured'
- Extend useful life of mine
- Comply with legal requirements of Mineral Right 831.04/3/2013 which requires exploration be conducted to maintain the license.

- Drill Plan- New Resource
- Drill Holes Executed
- ORE A RESOURCE
 - Measured
 - Indicated
 - Inferred

Objective

Upgrade existing mineral resources from 'Inferred' to 'Indicated' and / or 'Indicated' to 'Measured'

Objective

Update new resource in the west area of the mine; not included in 2013 resource statement